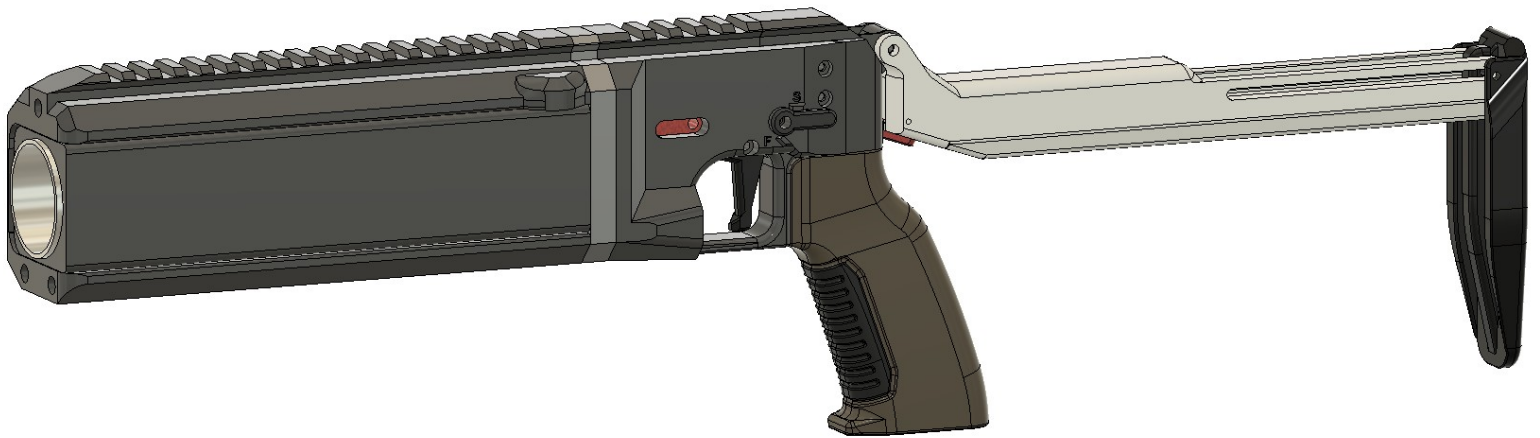


**Danny Meatball & Co.**

# **The 37mm Nameless Launcher**



A DMB & Co. Production  
AWCY?

## Description

This is the 37mm brother of the 26.5 Nameless. Featuring an auto opening barrel and safety.

This system has been tested to meet AWCY Launcher Testing Certifications.

## Hardware

3x M5x20mm Bolts

9x M3x25mm Bolts & Nuts

4xM3 Nuts

2x M3 Heat Set Insert

2x Ender Spring (or equivalent)

1x 25x8mm Spring (Not as strong as Ender Spring)

3mm Rod (72mm)

3mm Rod (45mm)

1x ¼ x 20 Threaded Rod (320mm)

2x ¼ x 20 Threaded Rods (250mm)

6x ¼ x 20 Nuts

1x 200mm Barrel

--- OR ---

1x ¼ x 20 Threaded Rod (250mm) (Short)

2x ¼ x 20 Threaded Rods (180mm) (Short)

6x ¼ x 20 Nuts

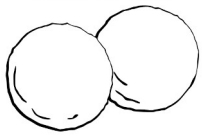
1x 130mm Barrel

-----Stock-----

1x M4x30mm Bolt & Nut

1x M3x35mm Bolt & Nut

1x 5x10mm Spring



## **Settings**

PLA+ minimum.

All Parts: 12-15 Walls, 25+ Infill (Minimum)

Breech: All walls/100% Infill

Tree Supports are recommended, but do what you want.

## **Print Orientation**

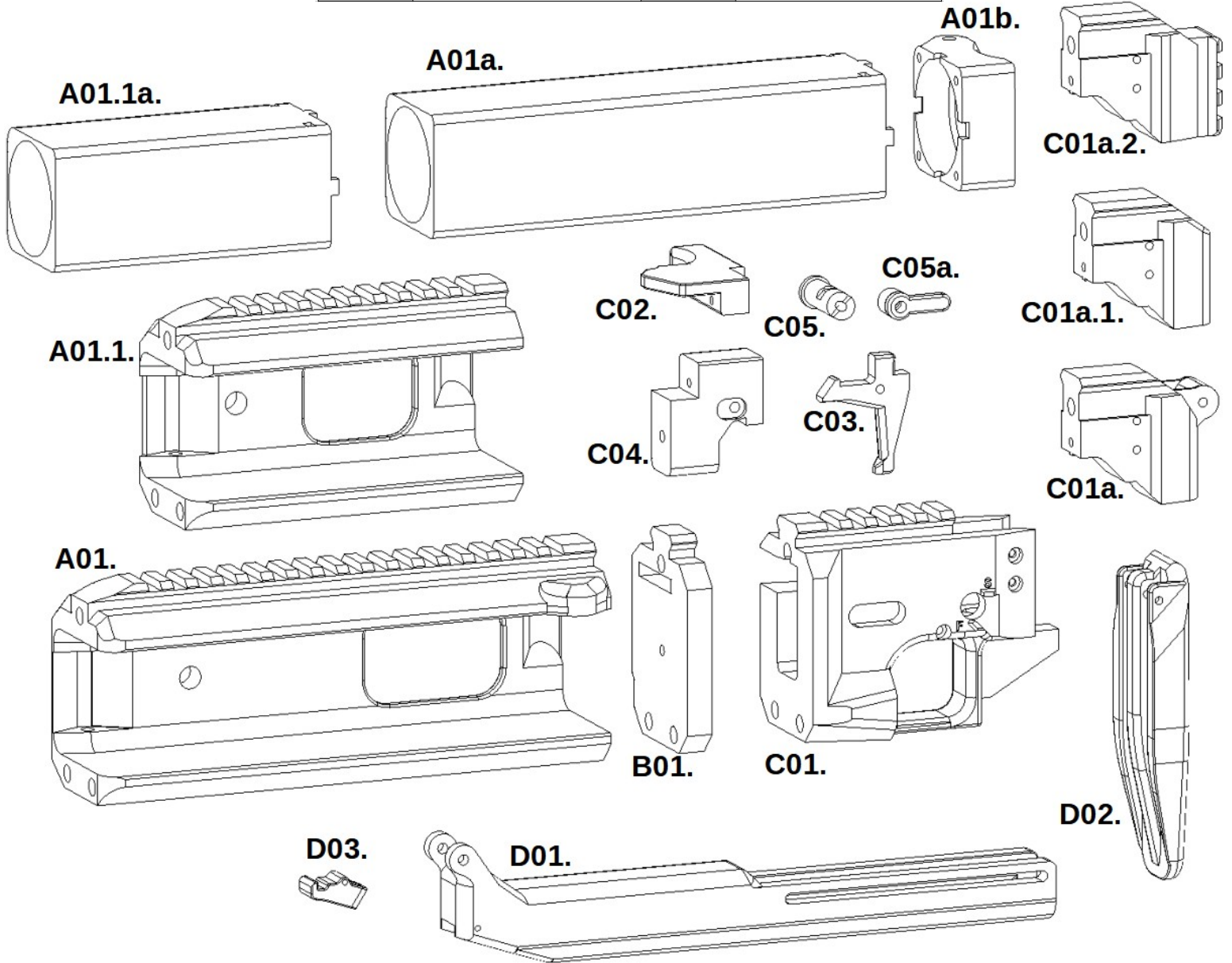
All parts are saved in their recommended orientation.

## **Ammunition**

Please see the [37mm Handbook](#) or [MILC](#) documentation.

**Printed Parts Break Down**

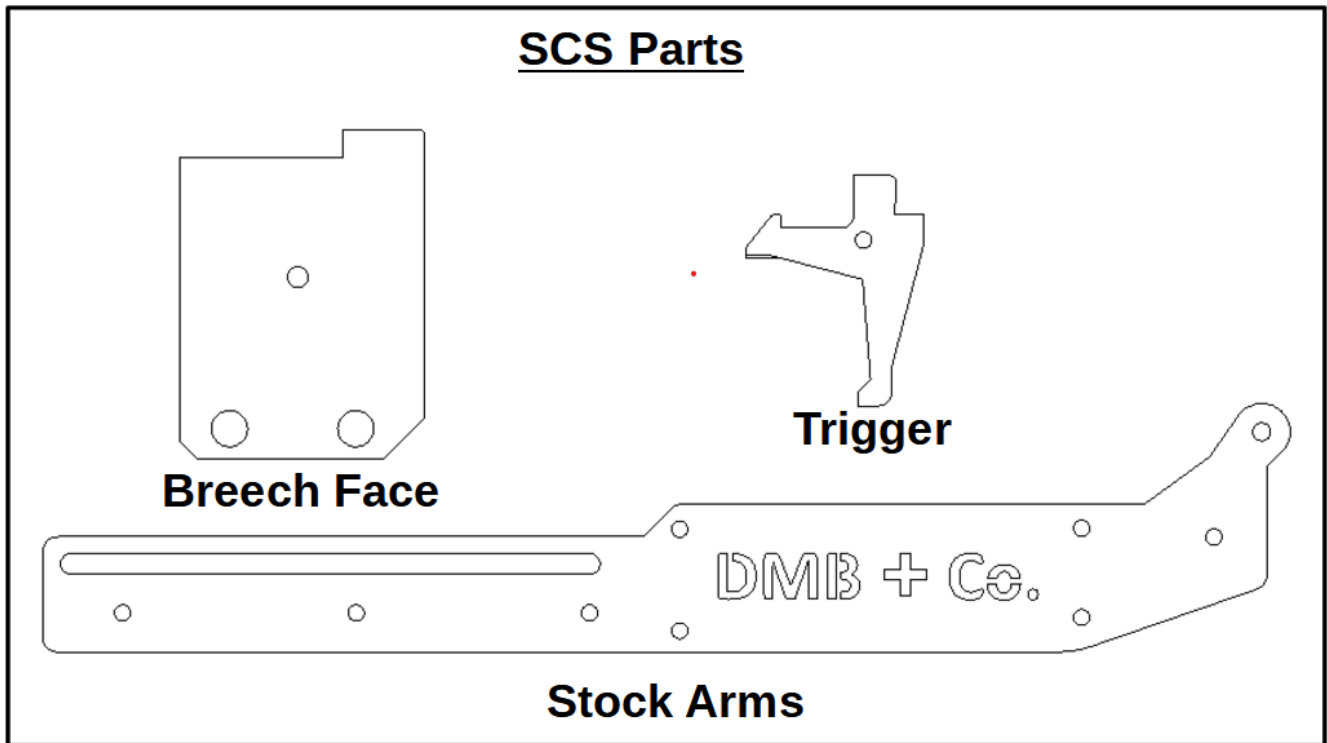
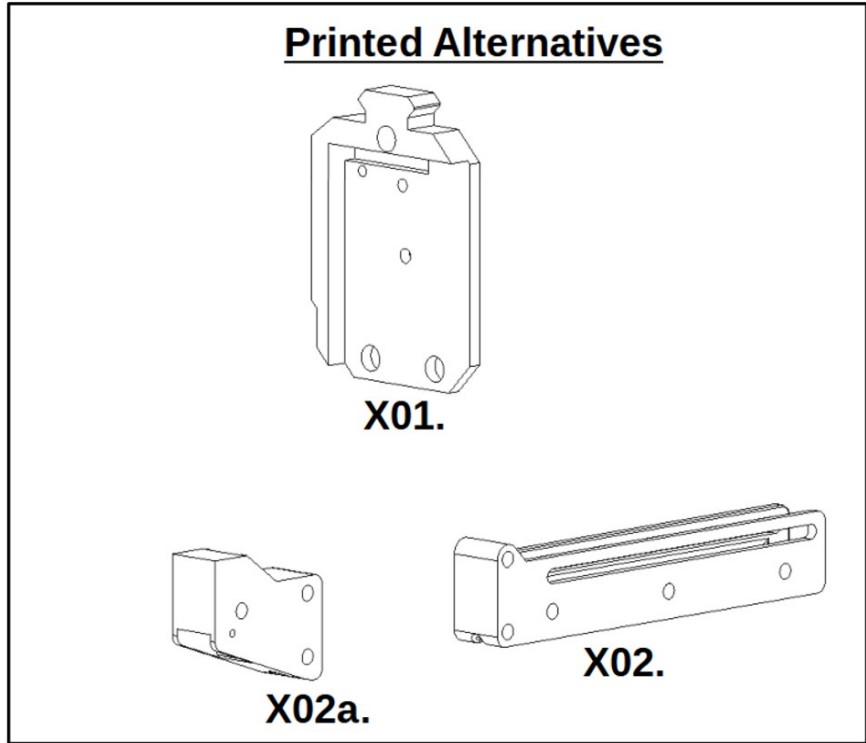
| Printed Parts |                               |         |                          |
|---------------|-------------------------------|---------|--------------------------|
| A01.          | Front Body                    | C01a.2. | Receiver Rear (Pic Rail) |
| A01.1.        | Front Body (Short)            | C02.    | Locking Lever            |
| A01.1a.       | Barrel Retainer (Front Short) | C03.    | Trigger                  |
| A01a.         | Barrel Retainer (Front Long)  | C04.    | Striker                  |
| A01b.         | Barrel Retainer (Rear)        | C05.    | Safety Bar               |
| B01.          | Breech                        | C05a    | Safety Lever             |
| C01.          | Receiver Front                | D01.    | Stock Body               |
| C01a.         | Receiver Rear                 | D02.    | Butt Pad                 |
| C01a.1.       | Receiver Rear (Slick)         | D03.    | Lock Button              |

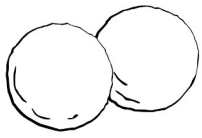


**SCS Parts Break Down**

| <b>Parts Numbering Guide</b> |                          |
|------------------------------|--------------------------|
| A01.                         | Main Part                |
| A01a.                        | Sub-assembly             |
| A01.1.                       | Alternative to Main Part |

| <b>Printed Alt.</b> |                      |
|---------------------|----------------------|
| X01.                | Breech (SCS)         |
| X02.                | Stock Spacer (Rear)  |
| X02a.               | Stock Spacer (Front) |

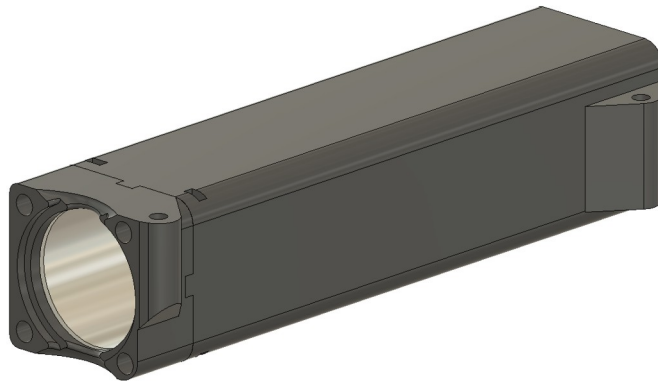




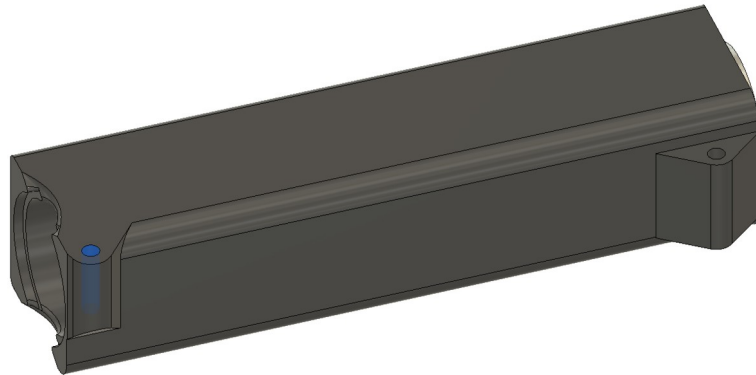
## Assembly

### 1. Barrel Retainer

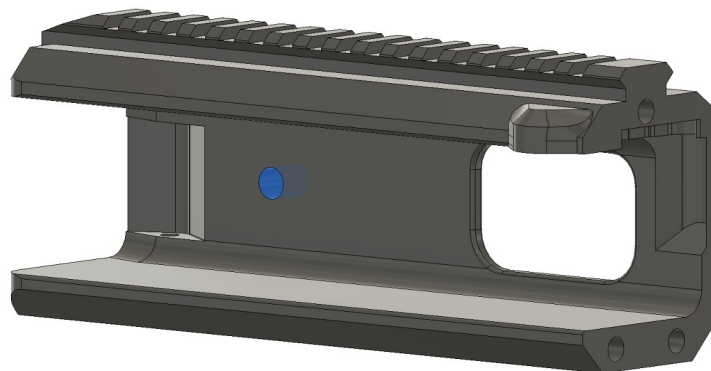
a. Epoxy Barrel into Barrel Retainer (Front) & attach Barrel Retainer (Rear) with 4x M3x25mm Bolts & Nuts.

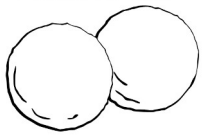


b. Insert 5x20mm bolt into the rear hole of the Barrel Retainer.

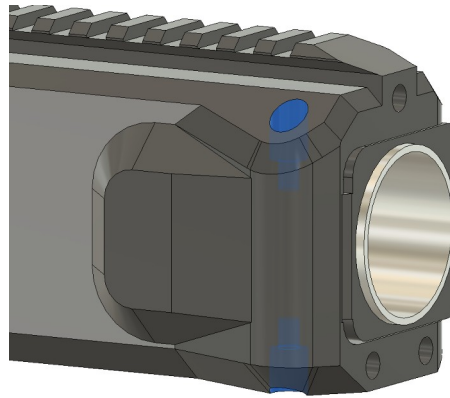


c. Insert Ender Spring into Front Body.





d. Insert Barrel Retainer into Front Body. Install 2x M5x20mm Bolts through the pivot point.

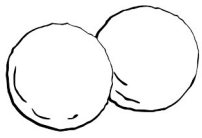


## 2. Trigger/Striker

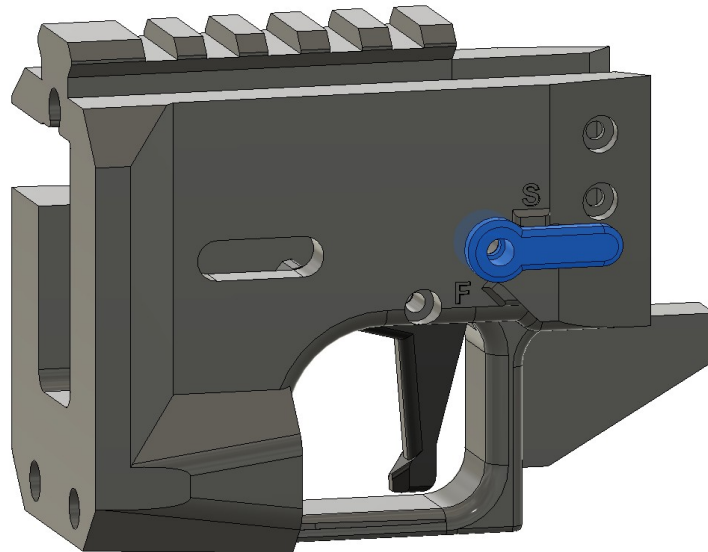
a. Insert Trigger into front of Front Receiver. Secure with M3x25mm bolt & nut.

b. Insert Safety Bar through right side of Front Receiver.





c. Insert Safety Lever (w/ M3 insert) into left side. Secure with M3x25mm Bolt.

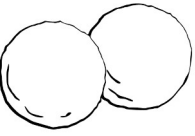


d. Insert 3mm Rod (72mm) into Receiver Rear.

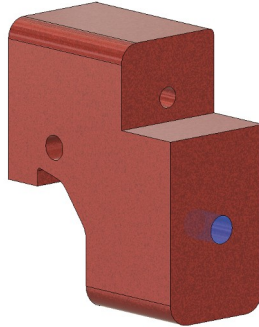
e. Insert Receiver Rear into Receiver Front. Secure with 2x M3x25mm Bolts & Nuts.



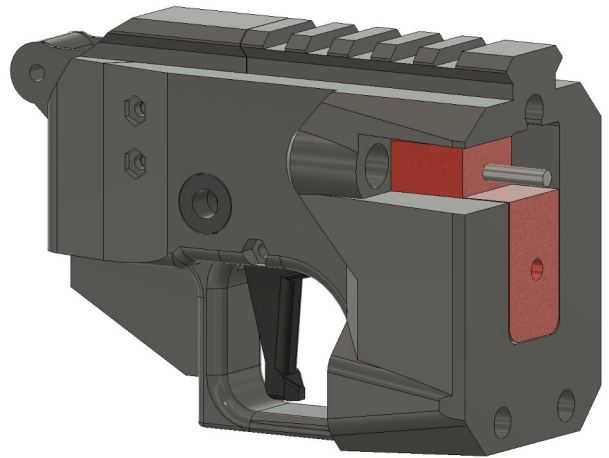
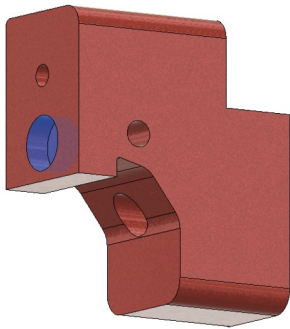


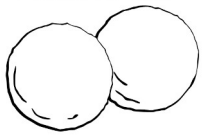


f. Install Heatset Insert into front of Striker. Install M3x25mm Bolt into Striker from rear (Firing Pin).



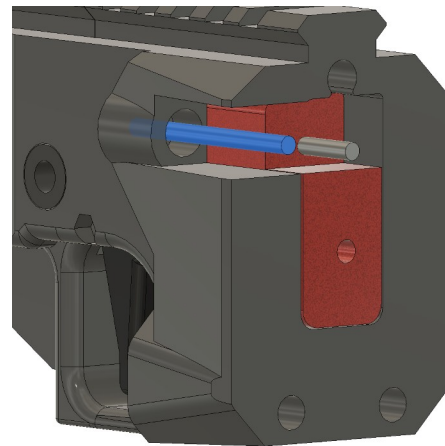
g. Insert Ender Spring into Striker. Insert Striker onto 3mm Rod into the front of the Receiver.



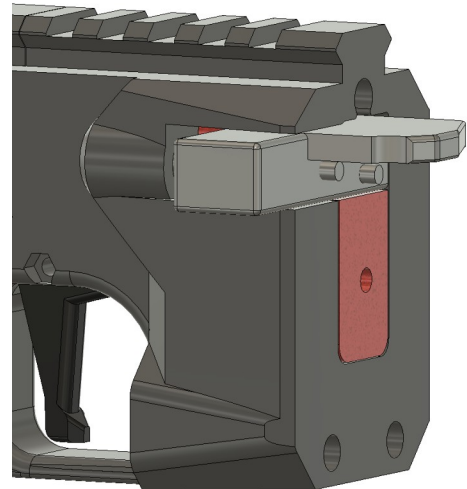


### 3. Locking Lever/Breech

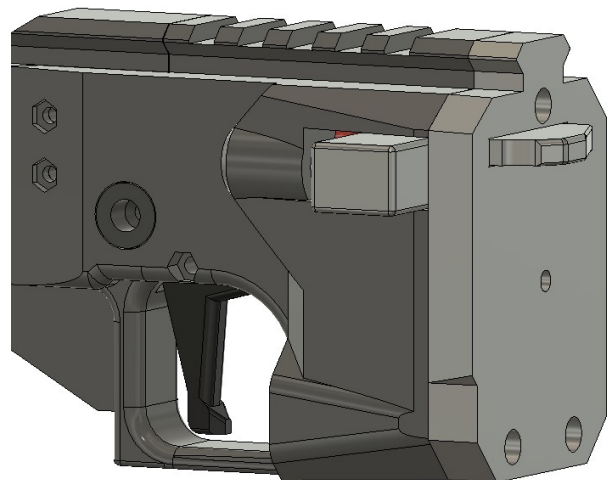
a. Insert 3mm Rod (45mm) into Receiver Front.



b. Install Spring & Locking Lever.

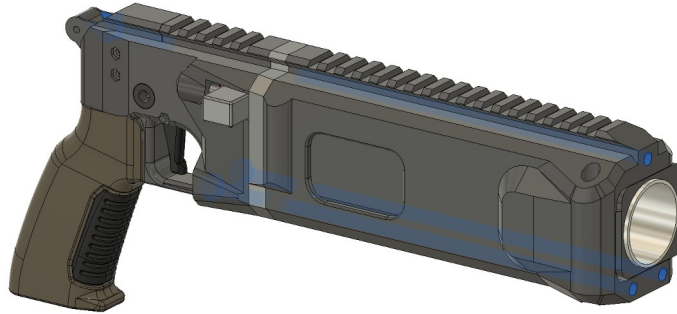


c. Install Breech onto the Receiver Front.



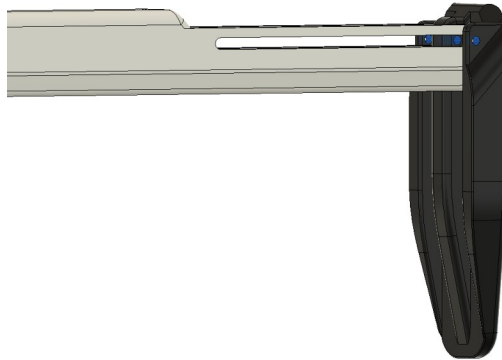
#### 4. Final Assembly

- a. Install  $\frac{1}{4}$  Threaded Rods and Nuts through all components.

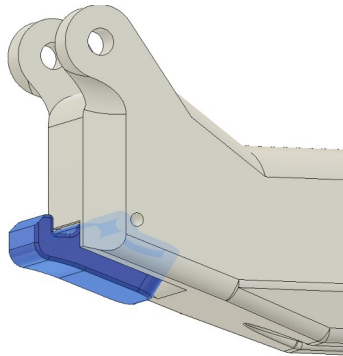


#### 5. Stock

- a. Install Butt Pad onto Stock Body with M3x35mm Bolt & Nut.



- b. Install Lock Button into Stock Body with 5mm Spring. Secure with a small snip of filament



- c. Install onto launcher with M4x30 Bolt & Nut.

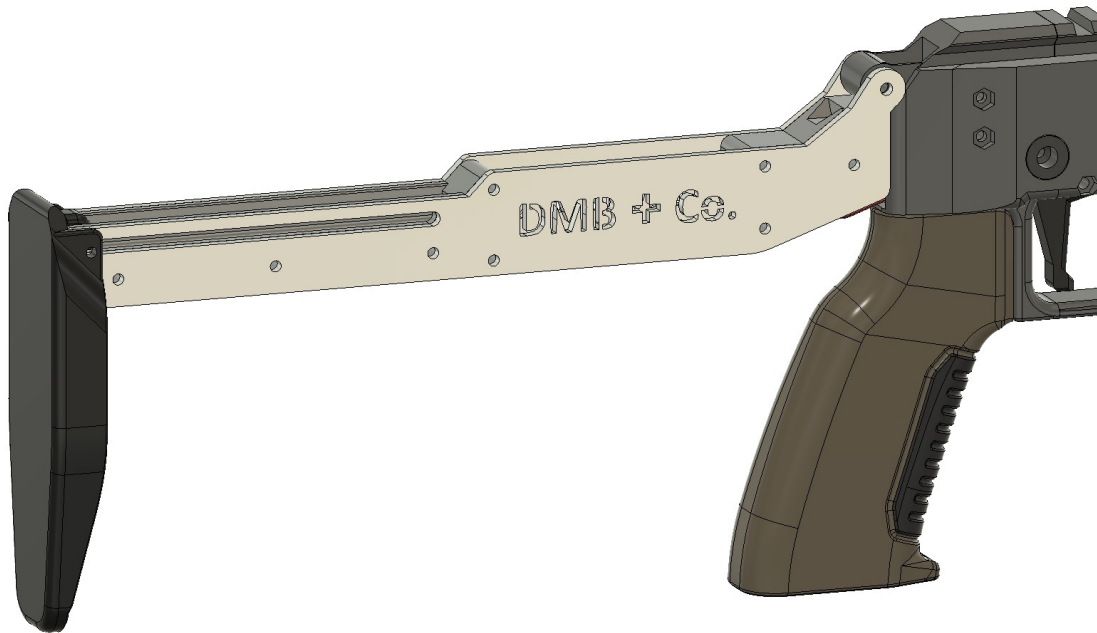
## 6. SCS Parts (Optional)

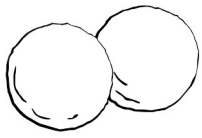
Additional hardware required:

-16x M3x6-10mm Bolts

-16x M3 Heatset Inserts

- a. Replace B01. Breech with X01. Breech (SCS). Install the Breech Face.  
-**Note:** The Breech Face is clamped in place buy the 1/4in Threaded Rods.
- b. Install 16x Heatset Inserts into the Stock Spacers.
- c. Install Lock Button & 5mm Spring into Stock Spacer (Front). Secure with filament snip.
- d. Install Stock Arms onto Stock Spacers with 16x M3 Bolts.
- f. Install the Butt Pad with M3x35mm Bolt & Nut.
- g. Install Stock onto launcher with M4x30mm Bolt & Nut.





## Credits

### Alpha Team:

Copper\_Shop\_419  
40oz

### Beta Manager:

Copper\_Shop\_419

### Beta Testers:

40oz  
atticus  
krrawn  
rustyshackleford777  
CHAOS TWIN 1  
CHAOS TWIN 2  
DaFizzles  
Nester  
NOT\_BATFE  
Nutabunga  
OA  
staykindasick  
Nester  
GutterCheese  
Caska  
ghostrider6103

If you have any questions, comments, improvements, or suggestions please find me  
@dannymeatball:matrix.org or @danny.meatball on Instagram